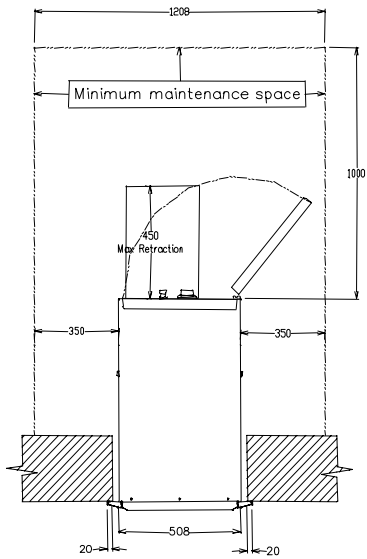




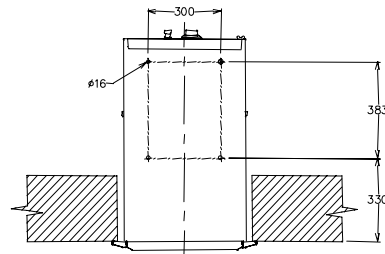
설계	확인
발신	111111
0~ 4mm	450 450 450
4~ 10mm	450
10~ 15mm	350 450 450
15~ 20mm	350 450 450
20~ 250mm	450 450 450
250~	450 450 450
4000~	450 450 450
단도	
표준기호기	

# NON ADJUSTOR TYPE(Biz)

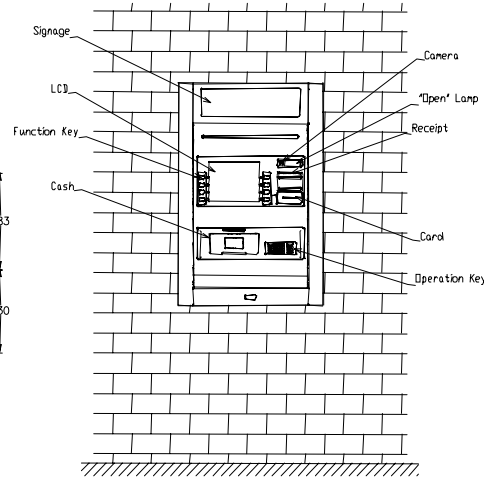
DIM: mm



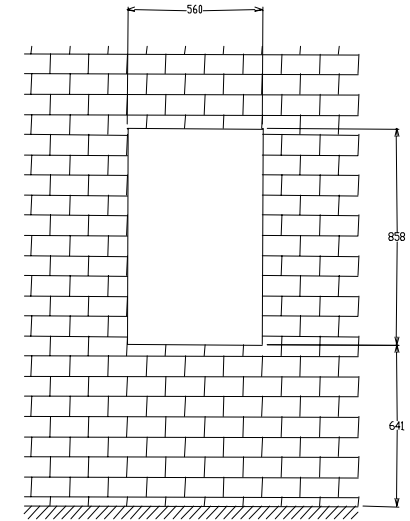
Plane cross-sectional view



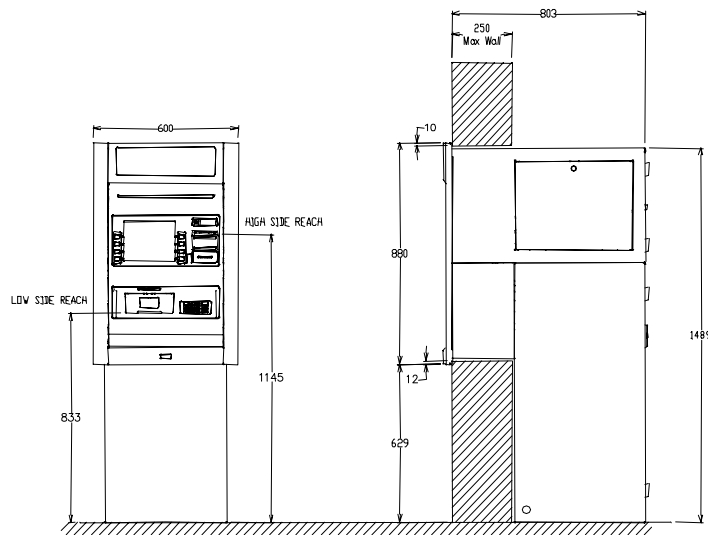
Anchor Hole



General view



Wall construction plan



Front view

Side cross-sectional view

**NOTES**

- The maximum thickness of wall that enables you to install TTW should not be exceeded 250mm (10 inch).
- The installation of a TTW is based on the floor from customer's foot of outside building.
- After installation TTW, the gap between collar and wall will be waterproofed by using of silicon.
- "The minimum maintenance space" should be secured in the rear of the TTW.
- All the measurements shown on the plan,  $\pm 5\text{mm}$  (0.2 inch) tolerance should be kept.
- Environment
  - \* Degree: 5~35 °C (Active), 0~40 °C (Stand-by)
  - \* Humidity: 25~86 % (Active), 10~90 % (Stand-by)
- Electricity
  - \* Voltage 110V~220V free voltage

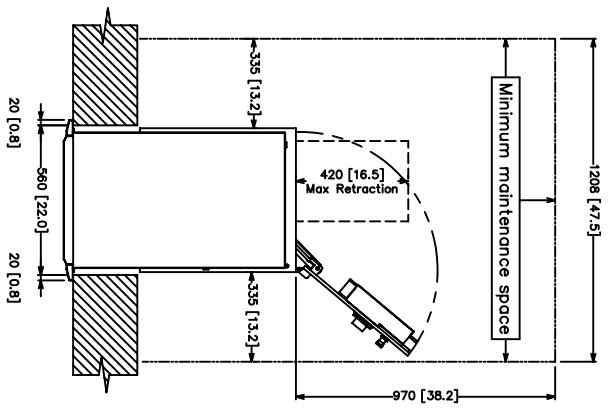
C	B	A	NO.	도면	용량	규격	제출	확인	비고
▶	▶	▶	▶	▶	▶	▶	▶	▶	▶
MODEL NAME				▶ 기종 LIBIUS-5040 ▶ 용량 - ▶ 원산지 - ▶ 한국도판 ▶ ▶ 용량 - ▶ ▶ 작성 ▶ 검토 ▶ 승인 ▶ 도판 - ▶ 시제번호					
				INSTALLATION PLAN 1/10 2/3 REV. 1.0					



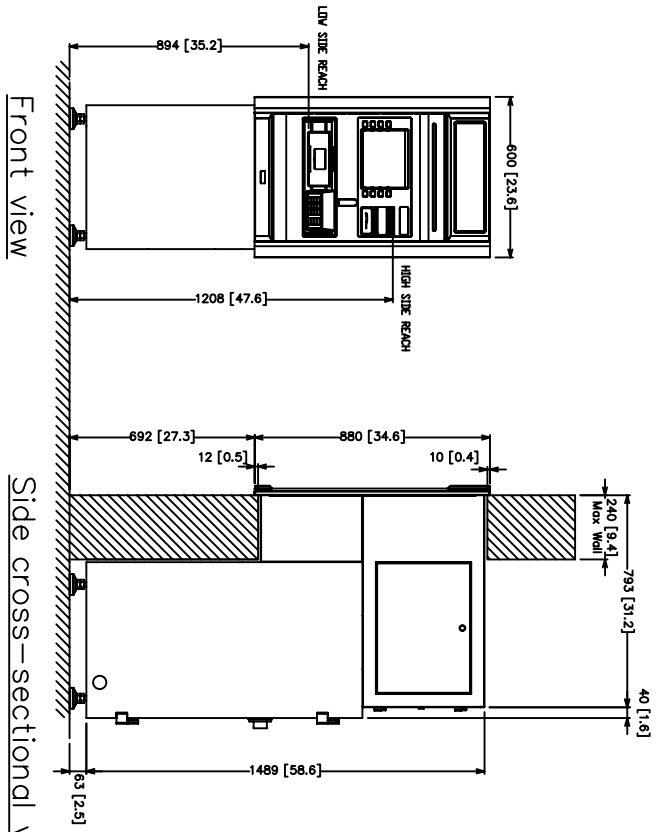
제출 일자	제출 번호
제출 부서	제출 담당
제출 대상	제출 목적
제출 일자	제출 번호
제출 부서	제출 담당
제출 대상	제출 목적

# ADJUSTOR TYPE (LEVEL 1)

DIM: mm[inch]

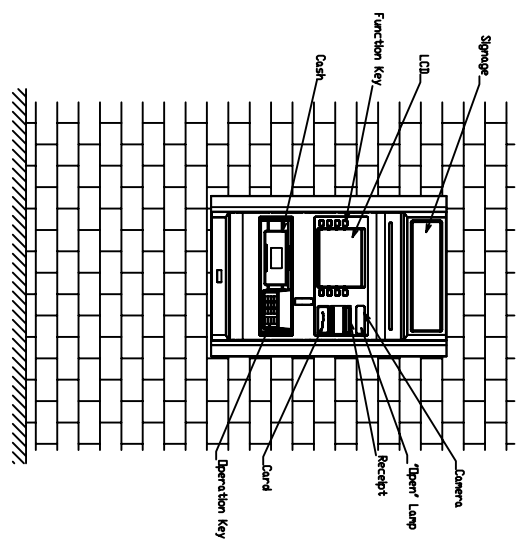


Plane cross-sectional view

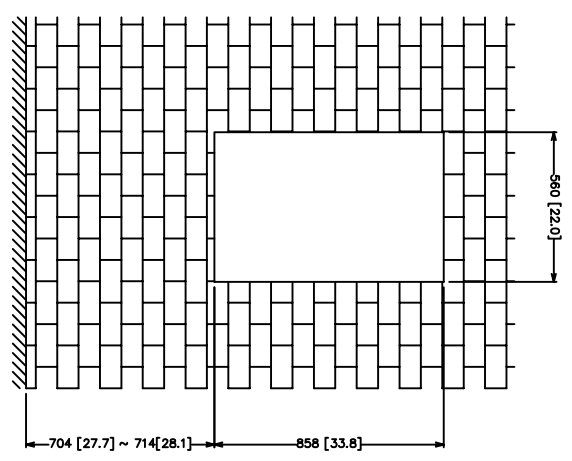


Front view

Side cross-sectional view



General view



Wall construction plan

### NOTES

- The maximum thickness of wall that enables you to install TTW should not be exceeded 240mm [9.8 inch].
- The height of TTW indicated on the plan is minimum height, it can be adjusted up to 70 [2.6 inch]mm.
- The installation of a TTW is based on the floor from customer's foot of outside building.
- After installation TTW, the gap between collar and wall will be waterproofed by using of silicon.
- "The minimum maintenance space" should be secured in the rear of the TTW.
- All the measurements shown on the plan, ±5mm [0.2 inch] tolerance should be kept.
- Environment
- Degree: 5~35 °C(Active), 0~40 °C(Stand-by)
- Humidity: 25~86 % (Active), 10~90 % (Stand-by)
- Electricity
- Voltage: 10V~220V free voltage

MODEL NAME	모델명	모델명	모델명	모델명	모델명
INSTALLATION PLAN	설치 계획서	설치 계획서	설치 계획서	설치 계획서	설치 계획서
1/1	1/1	1/1	1/1	1/1	1/1
2/2	2/2	2/2	2/2	2/2	2/2
10	10	10	10	10	10